



025B DUAL STAGE WIND CONTROLLER

Description

Provides two adjustable setpoints and two spdt output relays that trip instantly on setpoint. The second stage relay output resets 60 seconds after the wind speed remains continuously below the setpoint.

This model can control pressure reducing valves or VFDs in fountain applications, or activate warning and alarm systems in crane applications.

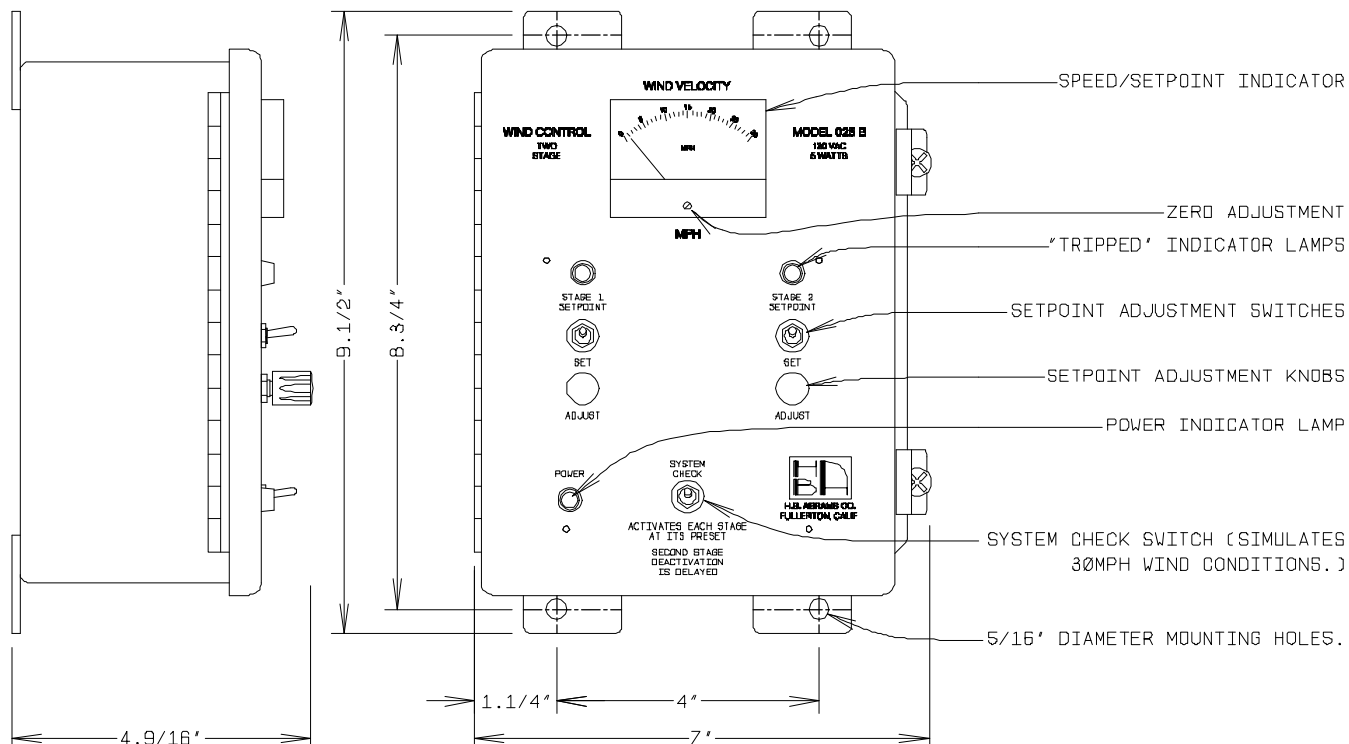
The wind speed is measured by means of an H.B. Abrams Company model 041 cup anemometer. The anemometer is constructed with lightweight, UV resistant plastic. The anemometer mount is a 1/2" male npt brass conduit connection. Refer to the model 041 datasheet for more detail.

The model 025B is standard with analog wind speed indication meter, calibrated for 0 to 30 mph display, 120vac single phase power input, and 5 amp relay outputs. Included is one cup anemometer sensor, but can accept input from two. The second stage features an off delay of 60 seconds to prevent excessive starting of the display pump.

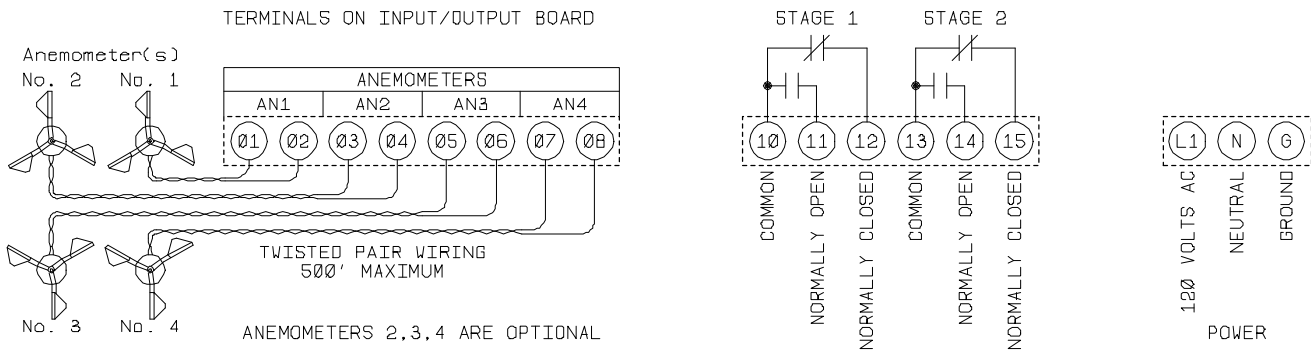
Installation

The controller enclosure is moisture proof but intended to be mounted indoors or under a cover to protect it from direct rain and sunlight. The anemometer (sensing head) can be mounted up to 500' away, with its own conduit and suitable cable (Belden 9250 or similar). The anemometer should be mounted upwind of the fountain by at least 50'. This allows the controller to adjust or shut down the display before the wind gust gets to the fountain.

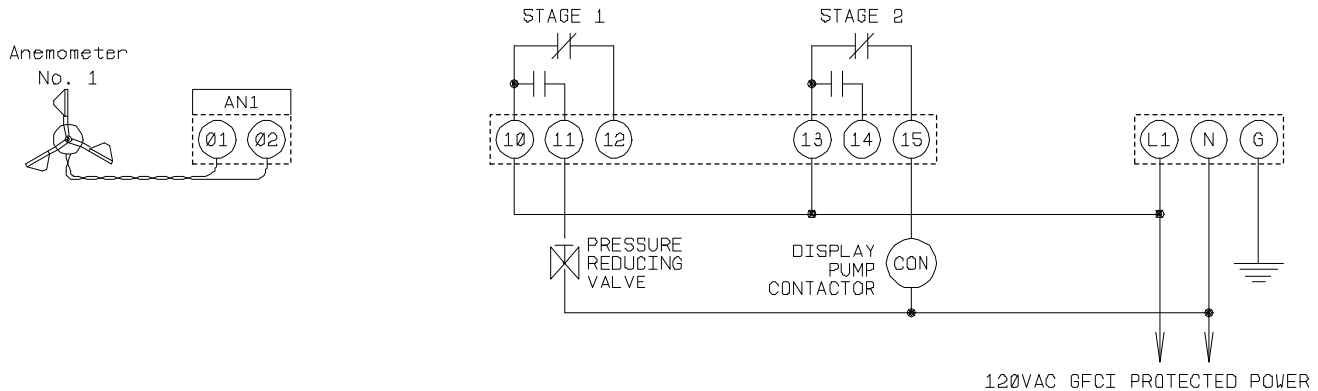
Dimensional Drawing



Connection Diagram



Suggested Electrical Connection



Operation:

The wind controller has no power switch and is intended to be powered from the fountain control system. It should be on whenever the display pump is on.

To set the trip points, use the "set" switch located above the "adjust" knob. Pulling the set switch down causes the setpoint to be displayed on the speed meter. Adjust the knob to the desired speed and release the set switch. This returns the meter to reading wind speed.

Stage 1 trips and resets instantaneously on passing the setpoint. Stage 2 is intended to control the display pump, and incorporates a 1 minute reset delay timer. This means that the wind speed must be below setpoint for 1 minute before the stage resets.

Specifications

| | | | |
|---------------------------------|----------------------|------------------------|---------------------------------------|
| Operational range..... | 0-30 mph | Power consumption..... | 5 watts |
| Accuracy..... | 5% of full scale | Shipping weight..... | 9 lbs |
| Set point adjustable range..... | 0 mph to 30 mph | Temperature range..... | 32°F to 140°F |
| Stage 3 off delay..... | 60 seconds | Anemometer cable..... | 22ga twisted pair or better (cat5 ok) |
| Enclosure type..... | NEMA 4 painted steel | Relay outputs..... | 5 amp SPDP relay contacts |
| Enclosure dimensions..... | 8¾" x 7" x 4½" | Warranty..... | One year |
| Input voltage..... | 120 vac nominal | | |
| Input frequency..... | 50/60 Hz | | |